



Unleash your music!



**BluBridge Mobile -
Wireless music
transmitter and receiver**

Content

BluBridge Mobile - Introduction	1
Important Notes	2
Ambient Conditions.....	2
AC Power Adapter	2
<i>Bluetooth</i> Communication.....	3
Unpacking and Checking the Delivery	4
Supplied Accessories.....	4
Ports and Operating Elements	5
The LED Indicators and their Respective Meaning.....	6
Preparing the Device for Use	7
Setting up the Device.....	7
Charging the Device	8
Working with the Device	9
Receive (Rx) Mode	9
Pairing with other devices	10
Transmit (Tx) Mode.....	13
Pairing with other devices	14
Troubleshooting and Tips	17
Receiver Function.....	18
Transmitter Function	19

BluBridge Mobile - Introduction

Your new BluBridge Mobile device is a wireless music transmitter and receiver.

BluBridge Mobile allows for *Bluetooth* devices, such as cell phones, iPods and other music sources to send wireless music to the BluBridge Mobile. The BluBridge then acts as a “bridge” converting the wireless music into a line level audio input for your home theatre or existing music system. Now you can listen to all your digital content anywhere the mood strikes you. Grab and Go with the rechargeable battery or continuous with USB.

BluBridge Mobile can also send audio to other *Bluetooth* equipped devices. For example, you can transmit the audio from the TV or Stereo to other BluBridge products or any compatible *Bluetooth* device.

Important Notes

Important User Safety Information

Ambient Conditions

Keep your device away from the following:

- extreme heat (direct sunlight, a heater, etc.)
- dust
- unsteady or inclined surfaces
- vibrating surfaces
- high-humidity (bathroom, sauna, etc.)

AC Power Adapter

Use only the AC power adapter packaged with your BluBridge Mobile. Using a third party AC power adapter may damage your BluBridge Mobile or cause it to malfunction.

If you know you will not be using your BluBridge Mobile for an extended period, it is best to unplug the AC power adapter from the power outlet. Never pull the power cord to unplug the AC power adapter; firmly grip the plug end of the AC power adapter to pull the plug from the outlet.

Bluetooth Communication

Install the BluBridge Mobile in an open area; *Bluetooth* wireless Class 2 operates within a “line of sight” range of approximately 30 ft. or 10m.

A *Bluetooth* device emits radio waves; therefore in rare circumstances it may affect electronic medical devices. Turn off and do not use near: hospitals, flammable gas or gas stations.

Your BluBridge Mobile complies with *Bluetooth* security standards. However, when using any wireless technology, there’s always a small potential for a security compromise.

NOTE: *Bluetooth* devices and Wireless LAN (IEEE802.11b/g) use the same frequency, interferences may occur. This may lead to communication problems including noise or dropped connections. In such cases, turn off the respective device to avoid interferences.

As specified by *Bluetooth* SIG, the BluBridge Mobile has passed the interoperability testing and conforms to *Bluetooth* standards. Devices that have not passed testing may not work properly.

Unpacking and Checking Delivery

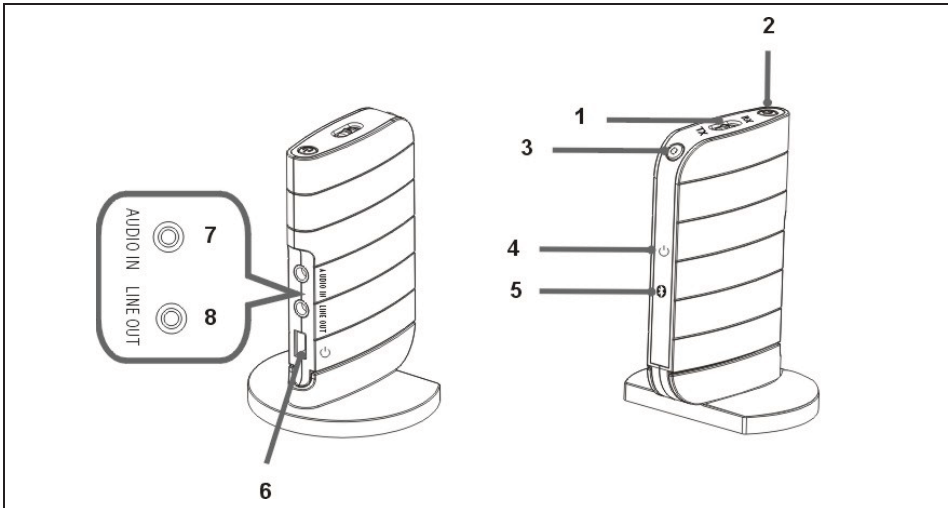
Unpacking and Checking Delivery

Unpack all the visible parts and accessories
Check for visible damage caused during transport
Verify delivery conforms to the details listed on the packing slip.

Supplied Accessories:

- Removable base stand
- AC power adapter
- 3.5mm Stereo to RCA cable
- 3.5mm Stereo interconnection cable
- USB cable

Ports and Operating Elements



No.	Component	Description
1	Tx/Rx switch	Use this Switch to change between transmitter or receiver function.
2	Power button	Use this button to switch the device on and off.
3	Pairing button	Use this button to connect or 'pair' with other A2DP capable <i>Bluetooth</i> devices.
4	Power LED	This LED shows the power status of the device.
5	Pairing LED	This LED shows the connection status of the device.
6	USB port	Connect the USB cable to this port to recharge the device.
7	Audio in	Connect the source device to port with the supplied connecting.
8	Line out	Connect receiving device to this port with the supplied cable.

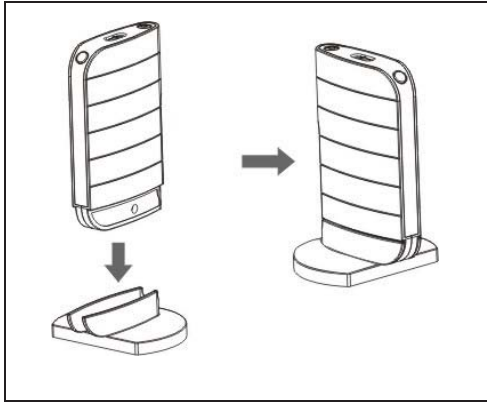
LED Indicators and their Respective Meaning

The LED indicators and their respective status

Status	Power LED	Pairing LED
Power on	green	blue
Power off	-	-
Low power	red (flashing)	-
Charging	red	-
Fully charged	green	-
Connecting	-	blue
Successful connection	-	blue (flashing)

If the pairing is not successful and the device is not used for about 5 minutes, the pairing LED turns off automatically.

Setting up the device



- ▶ Position the device on the supplied stand.

Charging the device

The BluBridge Mobile is powered by a rechargeable Li-ion battery. When power is low, a red warning light will flash.

To recharge the BluBridge Mobile you have two supplied options:

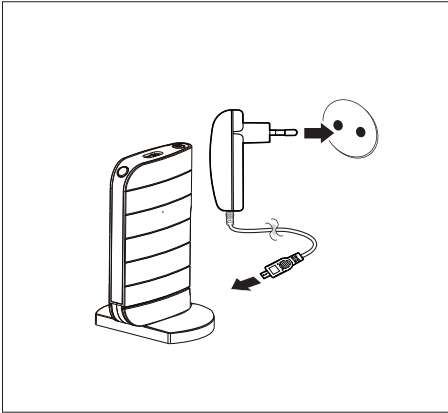
AC power adapter for use with an electrical outlet

USB cable for use with a compatible PC

NOTE: Before using the BluBridge, be sure it is fully charged. The first charge should take approximately 6 hours. Each consecutive charge will take approximately 2-3 hours.

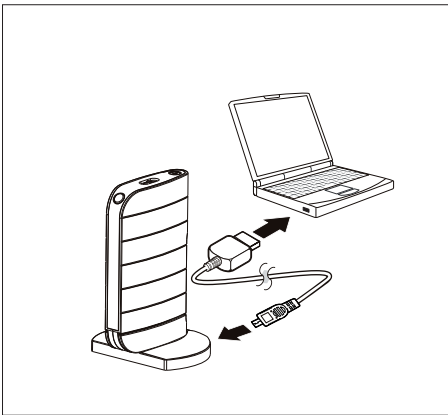
Preparing for Use

Charging via AC Adapter



- ▶ Plug one end of the USB power cable into the BluBridge Mobile and the other end into any available USB port on your PC.

Charging via PC

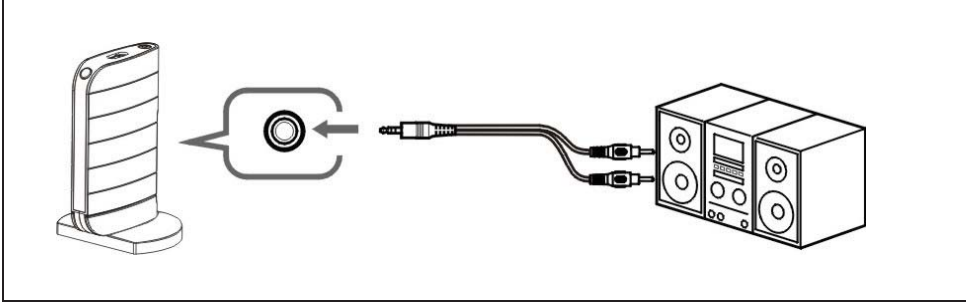


- ▶ Plug one end of the USB power cable into the BluBridge Mobile; plug the other end into the AC power adapter. Plug the AC power adapter into a compatible electrical outlet.

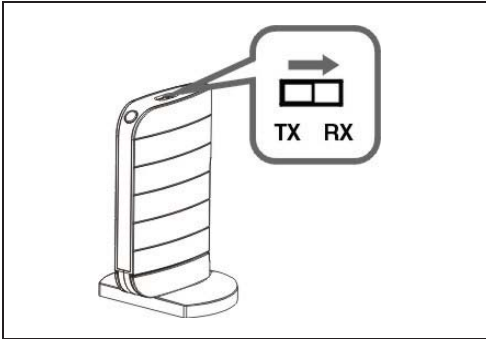
Receive (Rx) mode

The BluBridge Mobile receives a wireless audio signal from a capable *Bluetooth* source and converts it to an analog stereo output. This then connects to your home or desktop entertainment system. Or wear it and use with just about any wired 3.5mm headphones you want.

Follow the steps below to use the BluBridge Mobile in Receive (Rx) mode:



- ▶ 1. Connect the BluBridge Mobile to your entertainment system using the supplied interconnect cable.



- ▶ 2. Set the Tx / Rx switch to "Rx".

3. Press and hold the power button for approximately 2 seconds until both the power LED (green) and the pairing LED (blue) are illuminated.

- ▶ If you find the transceiver has been sitting idle for 10 minutes without receiving a signal, the power LED will shut off automatically. In this case, repeat step no. 3.

Pairing the devices

While pairing the devices, verify the following:

- The Tx / Rx switch is set to “Rx”.
- The BluBridge is turned on (Green LED)
- *Bluetooth* devices are within 1m of each other.
- Transmitter is Bluetooth A2DP capable.

Once the pairing occurs the *Bluetooth* LED will slowly flash on and off.

If pairing is not successful try again, press the *Bluetooth* button to turn on the blue pairing LED.

Verify the green power LED is illuminated, press the power button if needed.

Pairing with iPod adapter

Power on the BluBridge first and verify both LEDs are illuminated

Next, insert the BluBridge for iPod adapter into the iPod. The adapter blue LED will flash rapidly until pairing is complete. Once pairing has completed (20-30sec) the LED will flash slowly.

Note: Some adapter models use a *Bluetooth* button to enable pairing mode. Please consult the manufacturer documentation for enabling ‘Pairing’ mode.

Pairing with a Mobile Phone

Enable *Bluetooth* wireless within your particular phones menu options.
Enable a *Bluetooth* search for new devices.

A list with all detected devices should appear on the display. The device will be displayed as “BluBridge Mobile”.

If “BS06” is not displayed, try searching again.

Otherwise:

Select “BS06”.

You may be asked to enter a password. If so, enter “0000”.

Start the *Bluetooth* connection on the *Bluetooth* source device.
Start media player on the phone and enjoy.

When the pairing connection is properly established, the *Bluetooth* LED flashes slowly. Once paired that information is remembered by the BluBridge.

NOTE: For Stereo *Bluetooth* your phone must support the *Bluetooth* advanced audio distribution profile (A2DP).

For further details regarding the *Bluetooth* settings and features on your mobile phone, please consult your device manufactures website or user’s manual.

Pairing with a PC

Mac OS

Macintosh computer with built-in *Bluetooth* support or *Bluetooth* USB adapter capable of the Bluetooth advanced audio distribution profile (A2DP). Please consult your device documentation for proper setup.

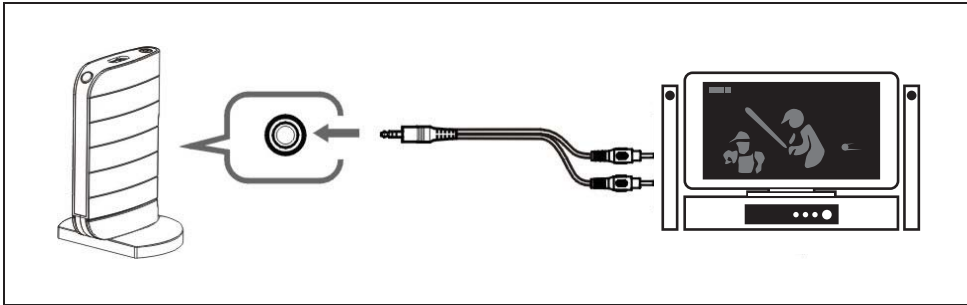
Windows

Windows computer with built-in *Bluetooth* support or *Bluetooth* USB adapter capable of the *Bluetooth* advanced audio distribution profile (A2DP). Please consult your device documentation for proper setup.

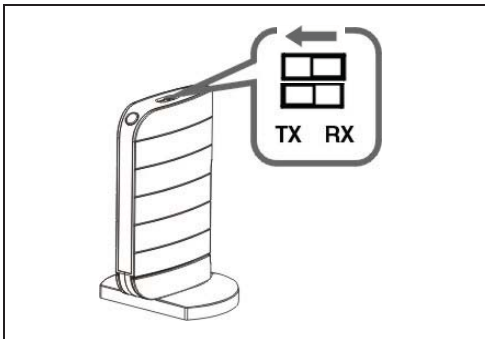
Transmit (Tx) mode

In Transmit (Tx) mode, the BluBridge Mobile transmits wireless audio from almost any audio source. This allows you to connect your home theatre, XBOX, CD/DVD player, MP3 player, computer, ETC.. and transmit that audio wirelessly to other BluBridge products or Bluetooth capable devices.

Follow the steps below to use the BluBridge Mobile in Transmit (Tx) mode



- ▶ 1. Connect the BluBridge Mobile to your audio source using the supplied interconnect cable.



- ▶ 2. Set the Tx / Rx switch to "Tx".
- ▶ 3. Press and hold the power button for approximately 2 seconds until both the power LED (green) and the pairing LED (blue) are illuminated.

- ▶ 4. If you find the BluBridge has been sitting idle for 10 minutes without a Bluetooth connection, the power LED will shut off automatically. In this case, repeat step no. 3.

Pairing the devices

While pairing the devices, verify the following:

- The Tx / Rx switch is set to “Tx”
- The BluBridge is turned on (Green LED)
- *Bluetooth* devices are within 1m of each other

Once the pairing occurs the *Bluetooth* LED will slowly flash on and off.

If pairing is not successful try again, press the *Bluetooth* button to turn on the blue pairing LED. Verify the green power LED is illuminated, press the power button if needed.

Pairing with Stereo Bluetooth headphones

Enable pairing mode on your headphones.

This process differs by manufacturer so please consult the device documentation for correct setup.

Make sure the transmit and receive (Tx and Rx) switch on the top of the BluBridge Mobile is set to Transmit (Tx).

Once pairing mode is enabled on your headphones, then verify that the power on the BluBridge Mobile and verify that both LEDs are illuminated.

Place the devices within 1 meter of each other, after approximately 15-30seconds the BluBridge pairing led will flash slowly.

Most Stereo *Bluetooth* headphones have a blue LED that will also flash slowly once a connection is established.

The pairing process should only have to occur once as the BlueBridge Mobile will remember up to eight devices it has paired with.

If pairing is unsuccessful power off both devices and repeat the process.

Pairing with Bluetooth enabled Speakers

Enable pairing mode on your BluBox speakers by pressing the *Bluetooth* button.

The blue LED will illuminate solid blue.

For speakers by other manufacturers please consult the device documentation for correct setup.

Make sure the transmit and receive (Tx and Rx) switch on the top of the BluBridge Mobile is set to Transmit (Tx).

Once pairing mode is enabled on the BluBox speakers, then power on the BluBridge Mobile and verify that both LEDs are illuminated.

Place the devices within 1 meter of each other, after approximately 15-30seconds the BluBridge pairing led will flash slowly.

Most Stereo *Bluetooth* speakers have a blue LED that will also flash slowly once a connection is established.

The pairing process should only have to occur once as the BlueBridge Mobile will remember up to eight devices it has paired with.

If pairing is unsuccessful power off both devices and repeat the process.

Trouble Shooting and Tips - General

Cause	Troubleshooting
Sound Breaks Up	<p>Make sure there is no interference from the following:</p> <ul style="list-style-type: none">• Walls and other objects can act as obstacles to the signal• A Wireless LAN device• Other 2.4 GHz wireless devices.• A microwave oven <p>Position the BluBridge and other <i>Bluetooth</i> devices in closer proximity to each other and away from interfering devices.</p>
Pairing Unsuccessful	<p>1) Position the BluBridge and other <i>Bluetooth</i> devices in closer proximity to each other.</p> <p>2) Check the status of the <i>Bluetooth</i> LED. If paired the blue LED will be flashing, If not paired, the LED will either be on or off.</p>
Low Power Indicator	<p>The power LED will flash red when the power is low, indicating time to recharge. Also see “Charging the device”.</p>

Trouble Shooting and Tips - Receive (Rx) Mode

Cause	Troubleshooting
No Sound	<ol style="list-style-type: none">1) Verify that the BluBridge switch is set to (Rx).2) Verify both the BluBridge and source device are powered on.3) Verify the analog connection between the BluBridge and the other audio components is properly secured.4) Verify the volume on the receiving and transmitting components is turned up.5) Verify the BluBridge and source device are within operational range.6) Verify the source device is not in silent or power save mode.
Low Sound Level	<ol style="list-style-type: none">1) Make sure the volume of the source transmitting device is turned up.2) Turn up the volume of the receiving device.
Distorted Sound	<p>If your volume setting is so loud that you are experiencing distortion, try lowering your volume in small increments until the device no longer distorts.</p>

Trouble Shooting and Tips - Transmit (Tx) Mode

Cause	Troubleshooting
No Sound	<ol style="list-style-type: none">1) Verify that the BluBridge switch is set to (Tx).2) Verify both the BluBridge and source device are powered on.3) Verify the analog connection between the BluBridge and the other audio components is properly secured.4) Verify the volume on the receiving and transmitting components is turned up.5) Verify the BluBridge and source device are within operational range.6) Verify the receiving <i>Bluetooth</i> device (headphones or speakers) are set to pairing mode.
Low Sound Level	<ol style="list-style-type: none">1) Make sure the volume of the source transmitting device is turned up.2) Turn up the volume of the receiving device.
Distorted Sound	<p>When the BluBridge Mobile input is connected to the Line Out jack of the source device, you may hear audio distortion. If so, try connecting to the headphone output jack instead.</p> <p>If your volume setting is so loud that you are experiencing distortion, try lowering your volume in small increments until the device no longer distorts.</p>

Unleash your music!



For product support and additional information please visit www.miccus.com

© 2009 Miccus, Inc. All rights reserved. BluBridge is a trademark of Miccus, Inc.
iPod and iTunes are trademarks of Apple, Inc., registered in the U.S. and other
countries. *Bluetooth*® is a registered
Trademark of the Bluetooth SIG, and used under license.